

**Lumiprobe Corporation**

1835 E. Hallandale Beach Blvd., #221

Hallandale Beach, FL 33009

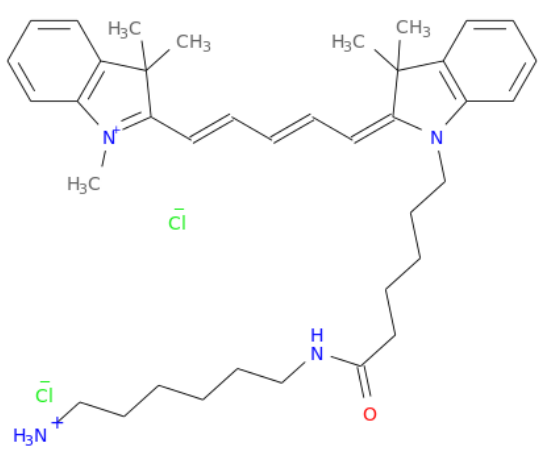
USA

Tel. +1(888)973 6353, fax +1 (888) 973 6354

[www.lumiprobe.com](http://www.lumiprobe.com)[order@lumiprobe.com](mailto:order@lumiprobe.com)

## CERTIFICATE OF ANALYSIS

Date 11/05/2013

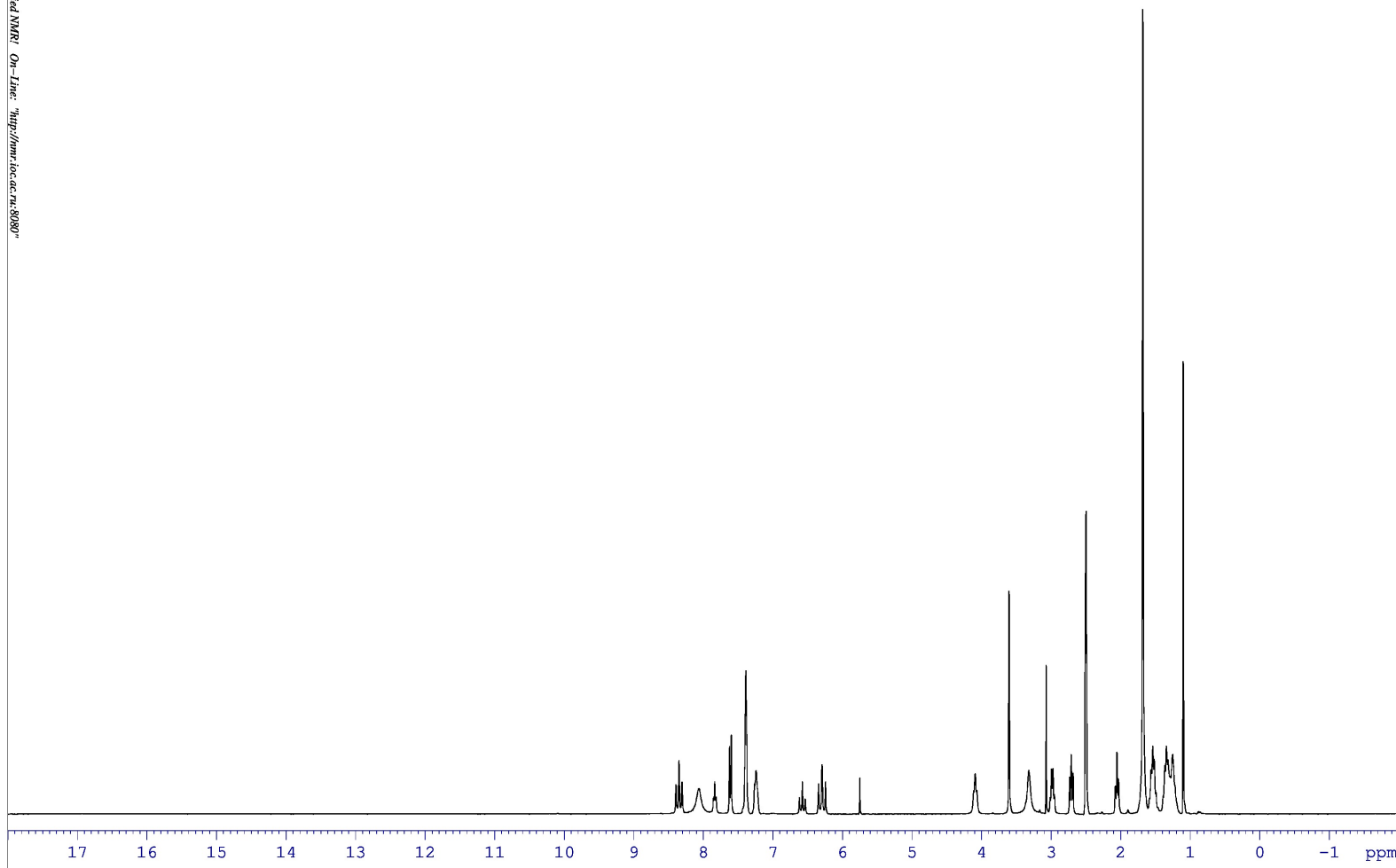
<b>Product name:</b>	Cy5 amine	<b>cat. no.</b>	x30C0
<b>Structure</b>		<b>batch no.</b>	VC42D
		<b>FW</b>	653.77
		<b>Appearance</b>	dark blue powder
		<b>Purity</b>	97%

### QUALITY CONTROL

	Reference value	Actual value	
<b>1H NMR</b>	95+%	95%	Analytical Data page 1
<b>HPLC</b>	95+%	97%	Analytical Data pages 2 – 3
<b>Mass spec</b>			Analytical Data page 4

/OLIG NK-6

The Best Applied NMR On-Line: <http://nmr.foc.ac.ru/8080/>



1H NMR

Sample Name: Cy5 amine

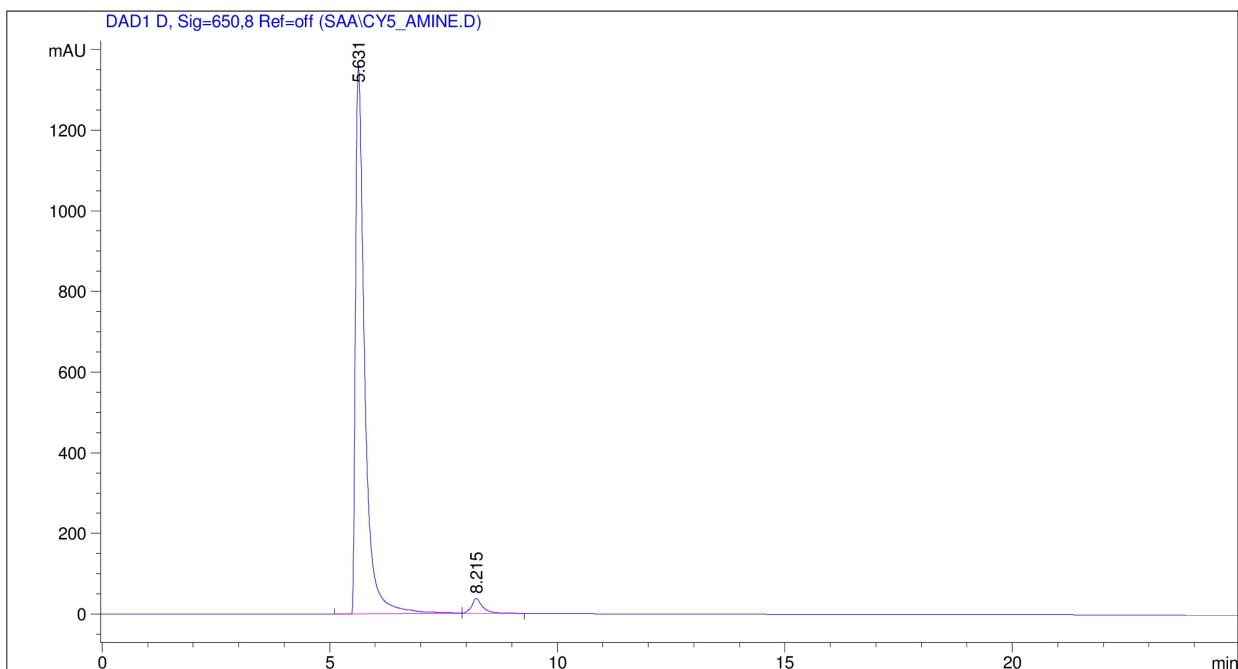
```

=====
Acq. Operator   : AU
Acq. Instrument : Instrument 1                Location : Vial 2
Injection Date  : 11/1/2013 2:04:03 PM      Inj       : 1
                                           Inj Volume : 1.5 µl

Acq. Method     : C:\CHEM32\1\METHODS\C8_250X4.6_LC_MS\CYANINES\CY5_NHS_MS.M
Last changed    : 11/1/2013 1:59:06 PM by AU
                  (modified after loading)

Analysis Method : C:\CHEM32\1\METHODS\DEF_LC.M
Last changed    : 11/1/2013 3:05:23 PM by Engel
                  (modified after loading)

Sample Info     : Cy5 amine 1 mg/mL in MeOH
    
```



Area Percent Report

```

=====
Sorted By      : Signal
Multiplier     : 1.0000
Dilution       : 3.0000
Use Multiplier & Dilution Factor with ISTDs
    
```

Signal 1: DAD1 D, Sig=650,8 Ref=off

Peak #	RetTime [min]	Type	Width [min]	Area [mAU*s]	Height [mAU]	Area %
1	5.631	BV	0.2118	1.92632e4	1355.50293	96.7171
2	8.215	VB	0.2480	653.85583	37.39508	3.2829

Totals : 1.99170e4 1392.89801

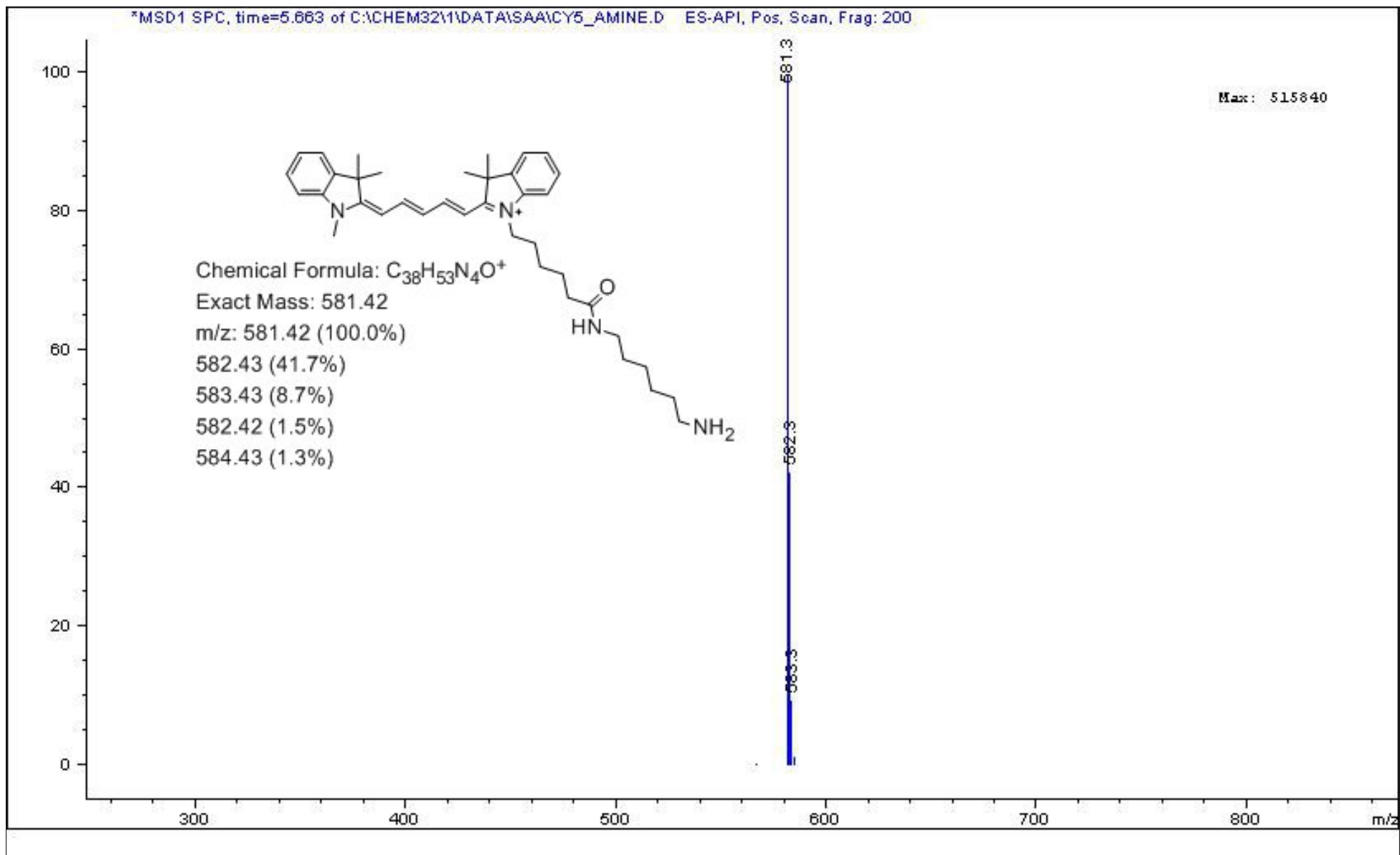
Data File C:\CHEM32\1\DATA\SAA\CY5\_AMINE.D

Sample Name: Cy5 amine

=====

\*\*\* End of Report \*\*\*

\*MSD1 SPC, time=5.663 of C:\CHEM32\1\DATA\5AA\CY5\_AMINE.D ES-API, Pos, Scan, Frag: 200



Mass spec